

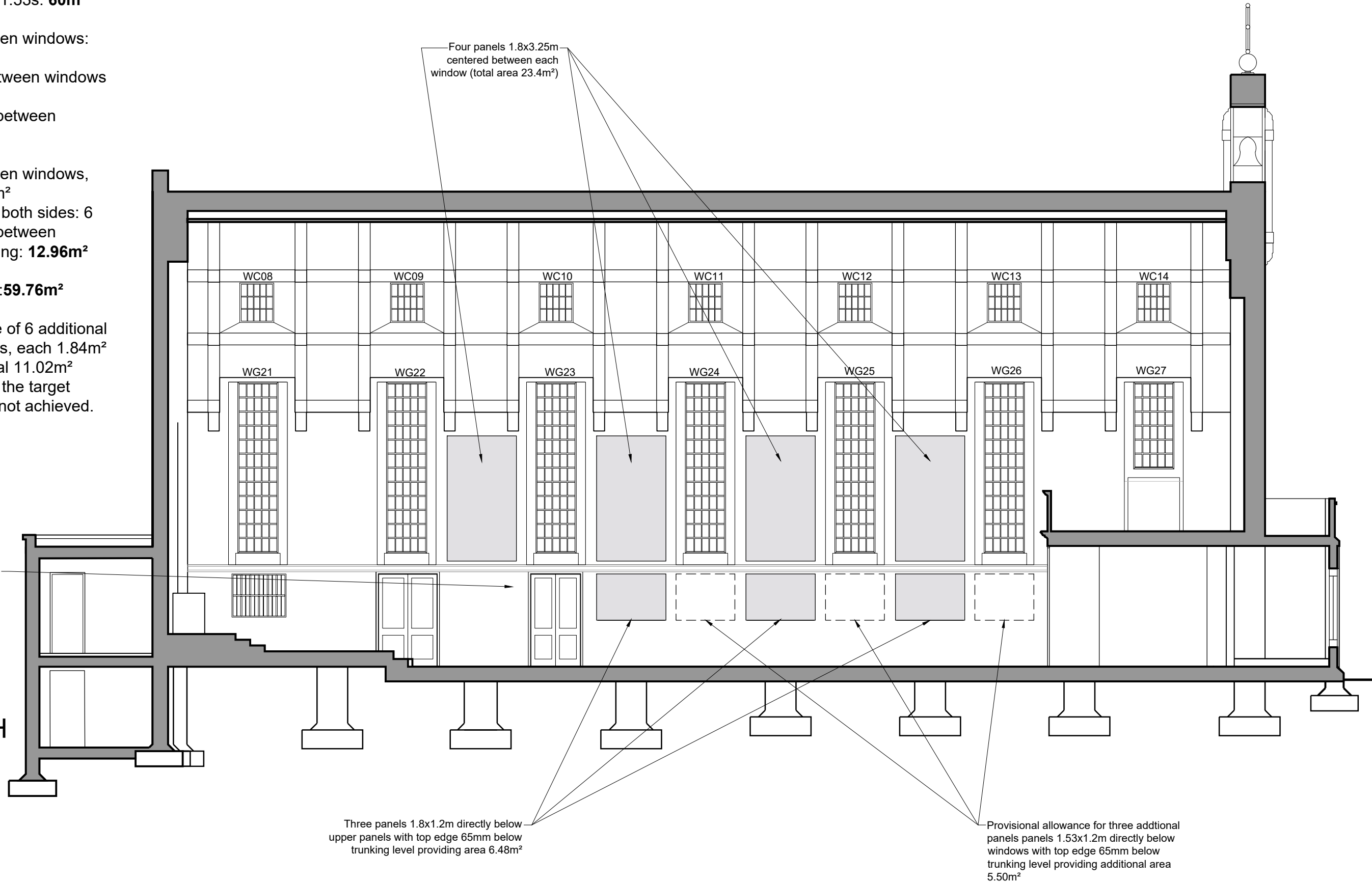
Minimum surface area to achieve a reverberation time of 1.53s: **60m²**

Area of panels between windows: 5.85m²
 Number of panels between windows on both sides: 8
 Total area of panels between windows: **46.8m²**

Area of panels between windows, below trunking: 2.16m²
 Number of panels on both sides: 6
 Total area of panels between windows below trunking: **12.96m²**

Total Combined area: **59.76m²**

Provisional allowance of 6 additional panels below windows, each 1.84m² providing an additional 11.02m²
 Only to be installed if the target reverberation time is not achieved.



SECTION H-H

Three panels 1.8x1.2m directly below upper panels with top edge 65mm below trunking level providing area 6.48m²

Provisional allowance for three additional panels panels 1.53x1.2m directly below windows with top edge 65mm below trunking level providing additional area 5.50m²

CARDEN & GODFREY
Architects
 Carden & Godfrey Limited
 33 Clerkenwell Close
 London EC1R 0AU
 Telephone: 020 7490 0300
 Facsimile: 020 7490 0004
 mail@cardenandgodfrey.co.uk

SECTION HH
 WITH PROPOSED PANELS
 Scale 1:100 Size A3 Date 23/11/21 Drawn AB No. 7059/5/21 Rev. C

CHURCH OF THE GOOD SHEPHERD
 CARSHALTON BEECHES
 ACOUSTIC PANELS
 DO NOT SCALE FROM THIS DRAWING